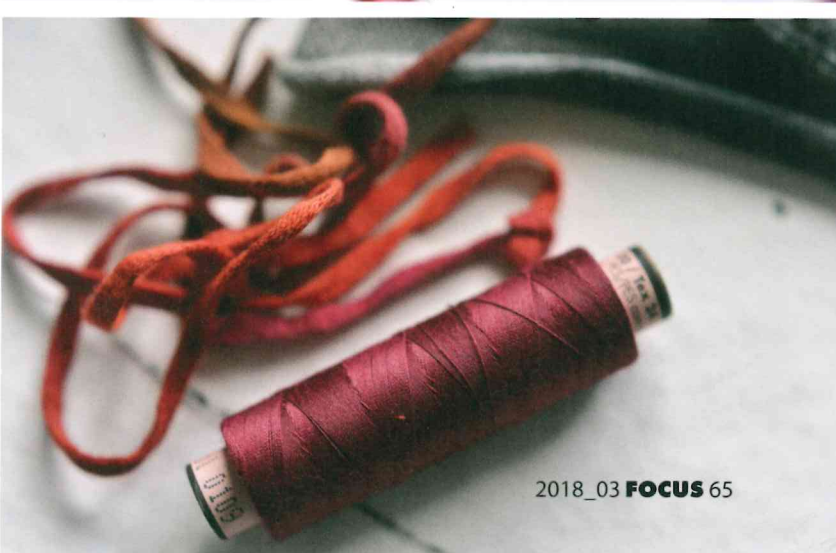
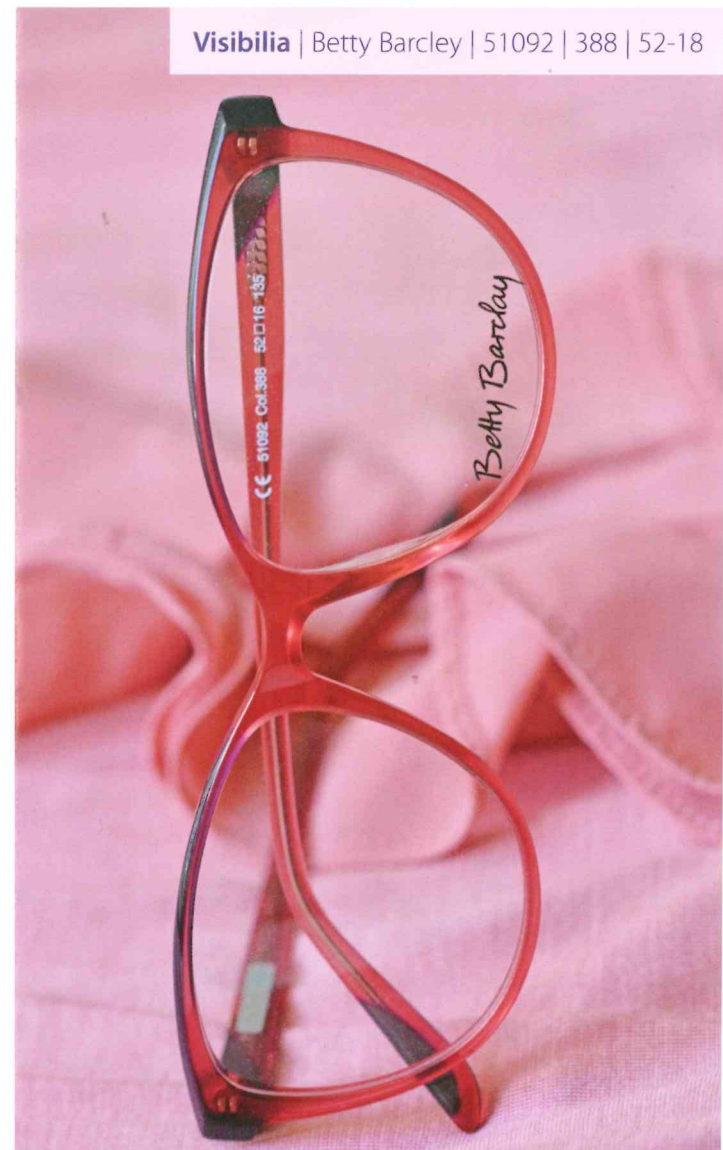




FRÜHLINGSFARBEN | **FASHION**

EBM | 99 JST. | U2-236 | 34M | 52-16

Visibilia | Betty Barclay | 51092 | 388 | 52-18





OWP | 1432 | 300 | 54-16



EBM | Unico | U205 | BL | 49-17



W+K | Liebeskind | 11028 | 991 | 49-20



Vielen Dank an **Grooten-Thal Modedesign** in deren Atelier wir die Fotos erstellen durften.  
E-Mail: [mode@grooten-thal.de](mailto:mode@grooten-thal.de)